

No Cartridge Replacement - Worldwide Unique

BIOSTAT-COMBIMAT

Lime-scale Protection- and Hygiene-Unit

Lime-scale in water causes damage to the lifelines in the house. During heating it will obstinately form deposits on the internal tube walls – layer by layer, day by day. Already after a short time, it can lead to a lime-infarct in the water pipe and in the hot-water heater as well as to clogged pipelines, calcified heater rods and energy loss.

If your installation remains unprotected, costly damages can occur.

The BIOSTAT-COMBIMAT from JUDO establishes the basis for hygiene inside the drinking water installation. Made to match the needs of one-family to a multi-family house.

The advantages:

- ◆ one device, two functions
- ◆ stops limescale deposits according to a patented method – DIN-DVGW-tested
- ◆ fights germs by means of activated oxygen
- ◆ blocking free function unit
- ◆ continuous water supply
- ◆ a fully automatic operating
- ◆ small current consumption
- ◆ space-saving shape
- ◆ time-saving mounting
- ◆ Made in Germany



for protection
against limescale





The Problems:

- ◆ Lime-scale deposits in water pipes, hot-water heaters and domestic appliances ...
- ◆ Micro-organisms populating the surfaces inside pipings and in domestic appliances (biofilm)
- ◆ Restricted water flow-through, culminating a piping breakdown
- ◆ Expensive repair of appliances
- ◆ Reduced thermal transfer in the hot-water heater, and therefore elevated energy costs (every mm of lime will cost approximately ten percent more energy)

The Problem-Solution

Our solution to lime-scale and germs problems is the BIOSTAT-COMBIMAT. The compact unit offers anti-lime-scale protection and hygiene according to the singular four-stage method.

Stage One:

The BIOSTAT-COMBIMAT creates “seed-crystals” out of the water.

These small calcium crystals are held in suspense and flow with the water into the piping system. There surplus calcium settles preferably on these crystals, and not on the surface of heating coils or the internal pipe surfaces. In the course of this no substances are added to the water, nor any substances are withdrawn from it.

Stage Two:

Optimisation through Selection

The seed crystals are selected. Thus, only the “best ones” leave the treatment chamber at the optimum size.

Stage Three:

Fully automatic Cleaning

During the cleaning, employing a patented cathode, the abundant lime-scale particles are collected in the treatment chamber, and flushed out automatically.

Stage Four:

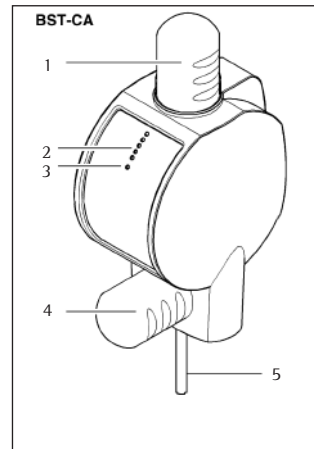
Hygiene by means of Active-Oxygen

In parallel to the anti-lime-scale protection the BIOSTAT-COMBIMAT fights also germs (applied for a patent).

We carry JUDO-products in stock

No house building without JUDO

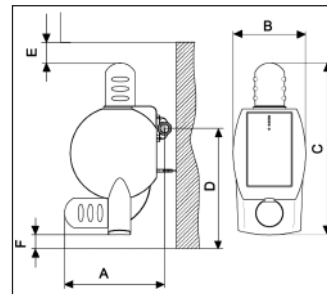
JUDO has been offering for more than 70 years an all-around protection of the pipe installations, the best possible water quality, energy saving and safety to your entire house. Have your domestic installation checked and updated to an appropriate and economical state.



- 1 Cleaning motor
- 2 Control lights
- 3 Manual button
- 4 Flushing motor
- 5 Flushing valve

Technical specifications

Model BST-CA	Type 15	Type 25
Pipe connection	3/4"	1"
Nominal water flow rate in m ³ /h	1,5	2,5
Pressure loss at nominal flow rate bar/psi	0,2/3	0,4/5,8
Incoming water max. °C/°F	30/86	30/86
Power-Connection V/Hz	230/50	230/50
Maximal power consumption (Watts)	20	25
Installation length (mm)	220	220
Order no.	8210411	8210412



- A = 320 mm/12,6" (front to pipe centre)
- B = 230 mm/9,0" (width)
- C = 550 mm/21,7" (height)
- D = 475 mm/18,7" (minimum height to pipe centre)
- E = 150 mm/5,9" (minimum distance above)
- F = 150 mm/5,9" (minimum distance below)

Quick-mounting

The patented JUDO QUICKSET-E (included in the scope of supply), facilitates the installation of the unit to trained personnel.



Wir sind zertifiziert
Regelmäßige freiwillige
Überwachung nach ISO 9001:2008



Qualität
made
in Germany



JUDO Wasseraufbereitung GmbH
P.O.Box 380 · D-71351 Winnenden
Germany
Tel. +49 (0)7195 / 692-0
Fax +49 (0)7195 / 692-110
E-Mail: export@judo.eu · www.judo.eu